

Product Summary

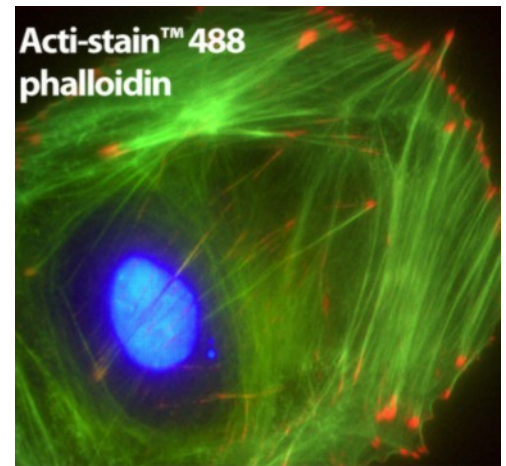
Cytoskeleton's Product Summary Highlights

Acti-Stain (Cat. # PHDG1, PHDH1, PHDN1, PHDR1)

Acti-stain is a well-characterized actin-staining phalloidin probe.

Cytoskeleton provides Acti-Stain™ 488, 535, 555, 670 at the best price! Acti-stain items are highly cited and comes with expert customer support.

Learn more at: <https://www.cytoskeleton.com/actin/acti-stain>



G-actin/F-actin *In Vivo* Assay Kit (Cat. # BK037)

This unique, and highly cited kit is only available from Cytoskeleton Inc. and is ideal for the following applications:

Study the effects of pharmaceutical compounds on the ratio of G-actin to F-actin

Study the effects of mutated cell lines versus their parent cell line for the change in ratio of G-actin to F-actin.

Learn more: <https://www.cytoskeleton.com/bk037>

BK037 Essential Kit Components:

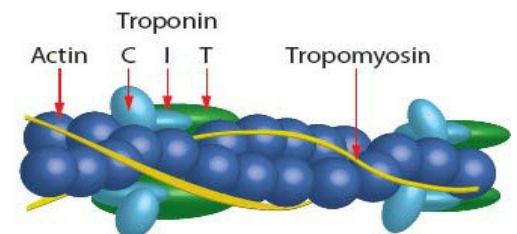
- Lysis and F-actin stabilization buffer
- ATP (Cat. # BSA04)
- Protease inhibitor cocktail (Cat. # PIC02)
- F-actin enhancing control solution
- F-actin depolymerization control solution
- Control G-actin Standard (Cat. # AKL99)
- Anti-Actin MAb (clone 7A8.2.1) (Cat # AAN02-S)
- SDS sample buffer (5 x)
- DMSO
- Manual with detailed protocols and extensive troubleshooting guide

Cardiac Thin Filament Complex (Cat. # TFC01)

The cardiac thin filament complex (Cat. # TFC01) biological activity can be determined from its ability to regulate myosin ATPase activity. The CTFC re-creates coated filaments which are analogous to the thin filaments of muscle fibers.

TFC01 is also ideal for identifying or characterizing proteins or small molecules that affect myosin / F-actin interaction.

Learn more: <https://www.cytoskeleton.com/cardiac-thin-filament-complex-tfc01>



The cardiac thin filament complex (CTFC) (Cat. # TFC01) has been assembled from purified F-actin (Cat. # AD99) and Tropomyosin / Troponin protein (TT) complex (Cat. # CS-TT05).